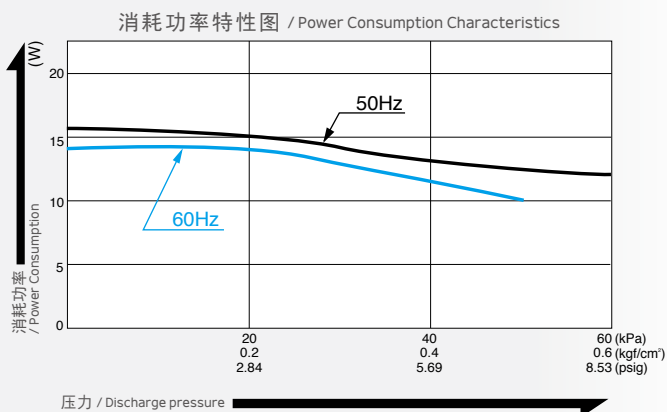
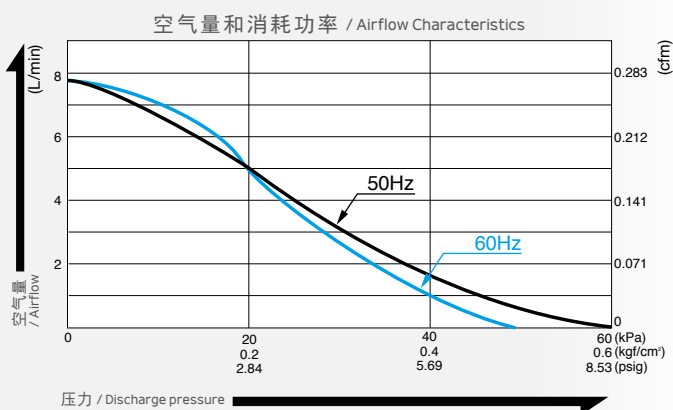


压缩泵 / Compressor

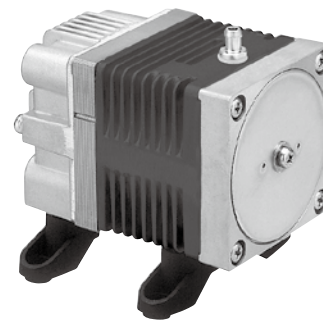
型式 AC0102



空气量特性图 / Airflow & Electric Current



※ 特性图只是参考值，并不是保证值。
/The characteristic charts are for reference only and are not guaranteed.



规格 / Specifications

额定压力 / Rated Pressure	20 kPa (0.2 kgf/cm ²) 0.2 bar 2.84 psig		
吐出空气量 / Rated Airflow	5 L/min 0.177 cfm		
最高压力 / Maximum Pressure	40 kPa (0.4 kgf/cm ²) 0.4 bar 5.69 psig		
额定电压 / Rated Voltage	100 V AC	115 V AC	230 V AC
消耗功率 / Power Consumption	15 W / 14 W	14 W	15 W
额定频率 / Rated Frequency	50 Hz / 60 Hz	60 Hz	50 Hz
耐用时间 (MTTF) / Rated Performance	10,000 小时 / hours		
吐出口尺寸 / Outlet	φ6 mm (外径) 软管接头 / 6mm O.D. hose barb		
额定时间 / Duty Cycle	连续 / Continuous		
线圈绝缘等级 / Coil Insulation Class	UL 规格品：相当于 B 类 / Class B for UL		
安装尺寸 / Mounting Dimensions	48 (L) x 62 (W) mm 1-57/64" (L) x 2-7/16" (W)		
本体重量 / Weight	0.7 kg 1.54 Lbs		
导线长度 / Leadwire Length	200 mm 7-7/8"		

用途例 / Application Examples

滴水机 / Dripping Machine



血压计 / Blood Pressure Tester



外形及安装尺寸图 / Dimensional Outline Drawing (单位 / Unit : mm)

