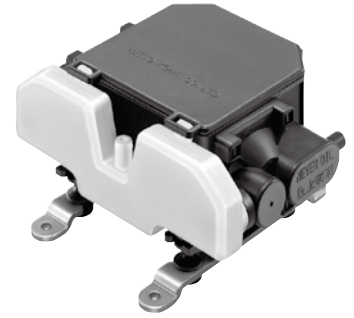


压缩泵 / Compressor

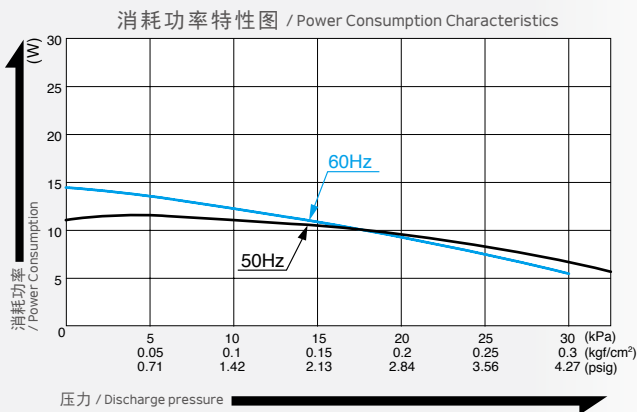
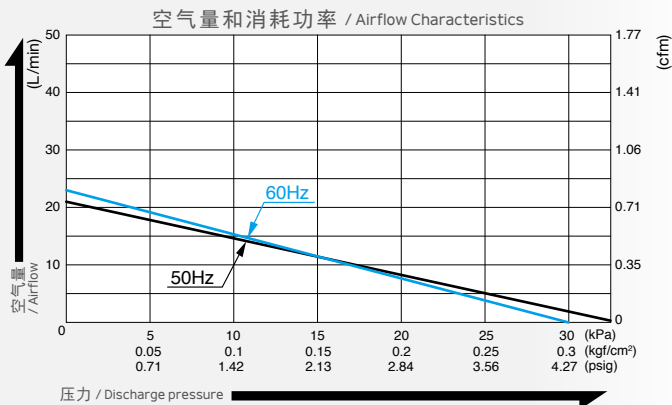
型式 VC0101E

定制 / is made to order



压缩泵专用 / Blower Type

空气量和消耗功率 / Airflow & Electric Current



※ 特性图只是参考值，并不是保证值。
/The characteristic charts are for reference only and are not guaranteed.

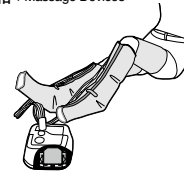
规格 / Specifications

| | | | |
|---------------------------------|--|----------|----------|
| 额定压力 / Rated Pressure | 10 kPa (0.1 kgf/cm ²) 0.1 bar 1.42 psig | | |
| 吐出空气量 / Rated Airflow | 15 L/min 0.53 cfm | | |
| 最高压力 / Maximum Pressure | 20 kPa (0.2 kgf/cm ²) 0.2 bar 2.84 psig | | |
| 额定电压 / Rated Voltage | 100 V AC | 120 V AC | 230 V AC |
| 消耗功率 / Power Consumption | 11.5 W | | |
| 额定频率 / Rated Frequency | 50 Hz / 60 Hz | 60 Hz | 50 Hz |
| 耐用时间 / Rated Performance | 5,000 小时 / hours | | |
| 使用压力范围 / Working Pressure Range | 0 ~ 20 kPa (0 ~ 0.2 kgf/cm ²) 0 ~ 0.2 bar 0 ~ 2.84 psig | | |
| 吐出口尺寸 / Outlet | φ7.5 mm (外径) 软管接头 / 7.5 mm O.D. hose barb | | |
| 额定时间 / Duty Cycle | 连续 / Continuous | | |
| 线圈绝缘等级 / Coil Insulation Class | 相当于 E 类 / E or its equivalent | | |
| 安装尺寸 / Mounting Dimensions | 66 (L) x 100 (W) mm 2-19/32" (L) x 3-15/16" (W) | | |
| 本体重量 / Weight | 0.82 kg 1.81 Lbs | | |
| 导线长度 / Leadwire Length | 300 mm 11-13/16" | | |

120 V UL 认证的，如需要可以提供。 / A UL approved model for 120V is available upon request.

用途例 / Application Examples

按摩器 / Massage Devices



防褥疮垫 / Bedsores Prevention Mattress



外形及安装尺寸图 / Dimensional Outline Drawing (单位 / Unit : mm)

